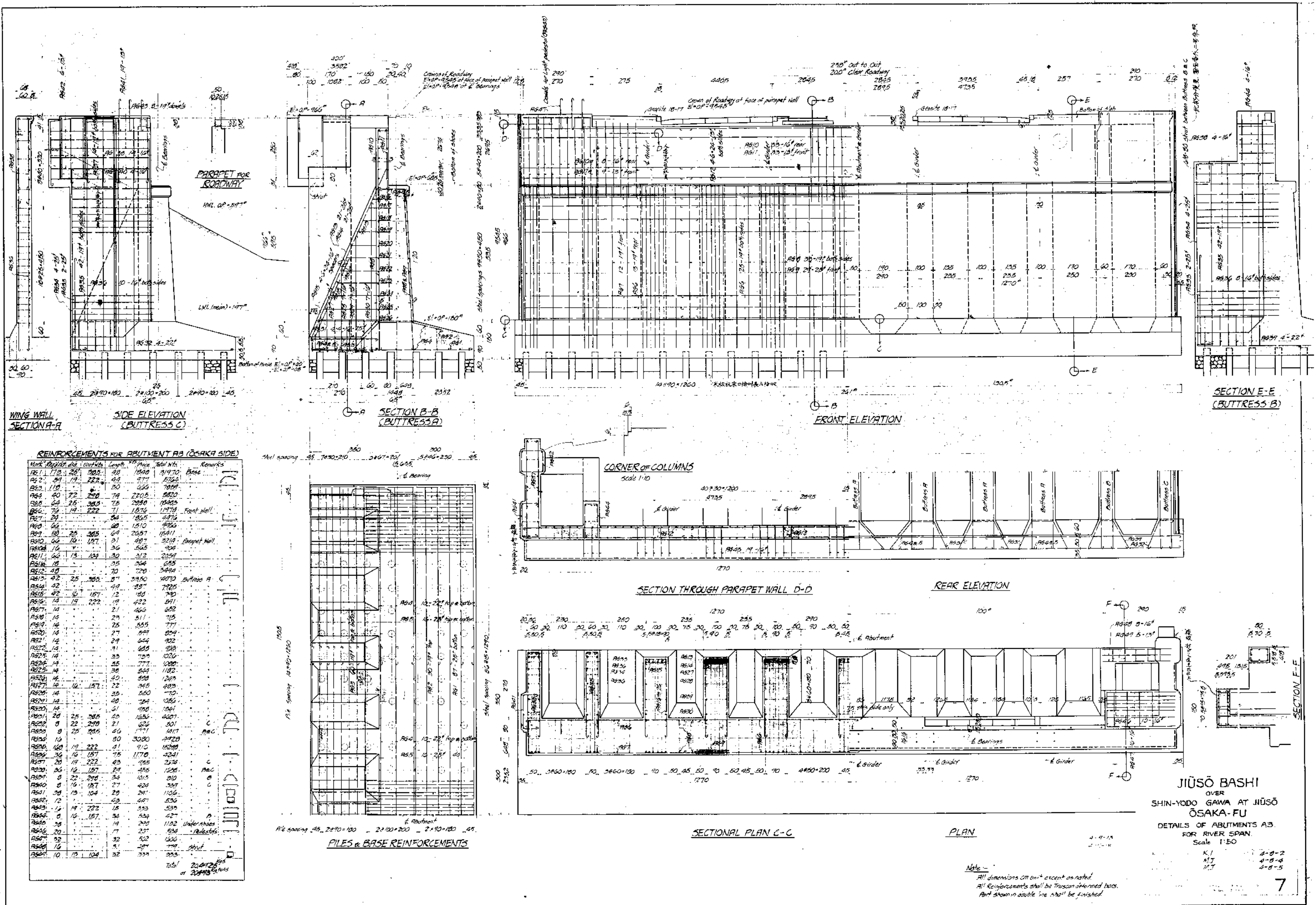


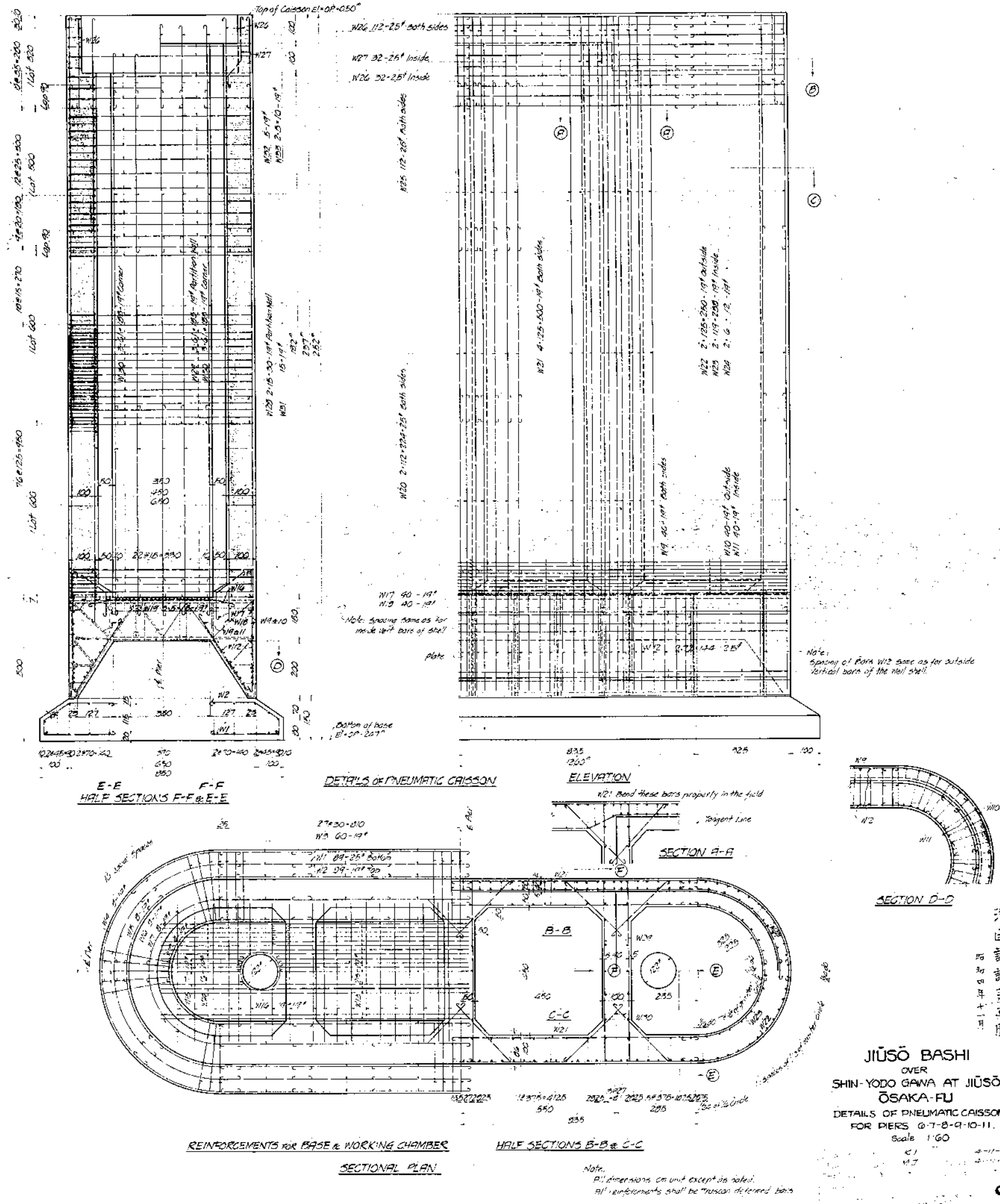
十三橋の抜粋図面 : JIUSO BASHI OVER SHIN-YODO-GAWA AT JIUSO OSAKA-FU

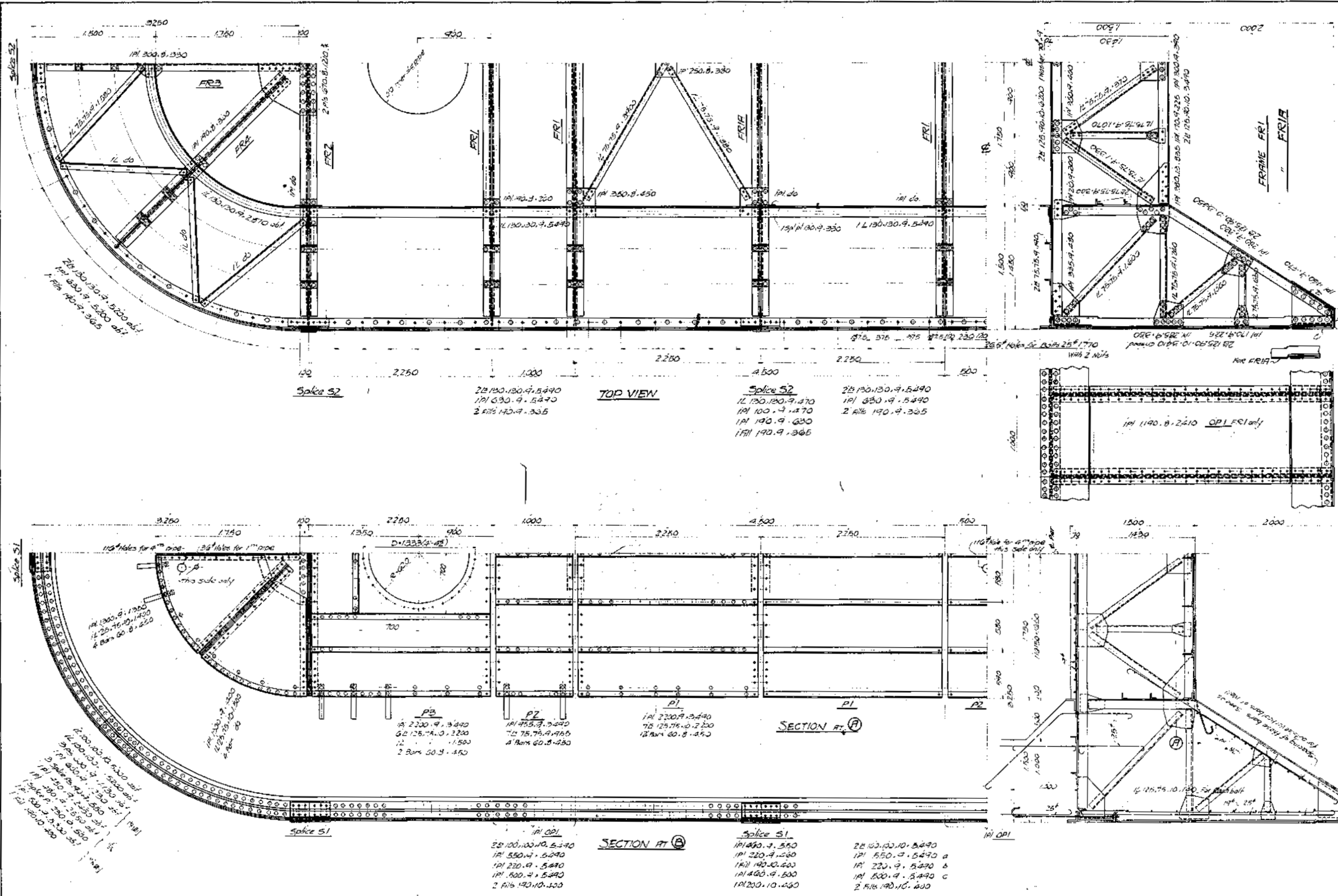
図番	標題	掲載
1	GENERAL PLAN & ELEVATION	
2	GENERAL PLAN & ELEVATION OF SPAN OVER CANAL	
2A	GENERAL PLAN & ELEVATION	
3	CROSS SECTION OF BRIDGE FLOOR GIRDER SPAN & TRUSS SPAN	
4	DETAILS OF ABUTMENTS FOR CANAL SPAN AND APPROACH RETAINING WALLS	
5	DETAILS OF ABUTMENTS A1 & A2, FOR CANAL SPAN	
6	DETAILS OF GIRDER PIERS PIERS 1-16-2-3-4-5-12-13-14-15	
7	DETAILS OF ABUTMENT A3 FOR RIVER SPAN	
8	DETAILS OF SHAFT FOR PIERS P6-7-8-9-10-11	
9	DETAILS OF PNEUMATIC CAISSON FOR PIERS 6-7-8-9-10-11	
10	STEEL FRAME FOR WORKING CHAMBER OF PNEUMATIC CAISSON	
11	DETAILS OF ABUTMENTS A4 FOR RIVER SPAN	
12	(GIRDER SPAN) DETAILS OF FLOOR SLAB (1)	
13	(GIRDER SPAN) DETAILS OF FLOOR SLAB (2)	
14	(GIRDER SPAN) DETAILS OF FLOOR SLAB (3)	
15	(TRUSS SPAN) DETAILS OF FLOOR SLAB(4)	
16	MARKING DIAGRAM OF GIRDER SPANS	
17	DETAILS OF CROSS BEAMS & STRINGERS	
18	DETAILS OF CROSS BEAMS (II)	
19	DETAILS OF STRINGERS (I)	
20	DETAILS OF STRINGERS (II) SHOES & ROCKERS	
21	DETAILS OF MAIN GIRDER (1)	
22	DETAILS OF MAIN GIRDER (2)	
23	DETAILS OF MAIN GIRDER (3)	
24	DETAILS OF MAIN GIRDER (4)	
25	DETAILS OF MAIN GIRDER (5)	
26	DETAILS OF MAIN GIRDER (6)	
27	DETAILS OF MAIN GIRDER (7)	
28	DETAILS OF MAIN GIRDER (8)	
29	DETAILS OF MAIN GIRDER (9)	
30	DETAILS OF LATERAL BRACINGS & SHOES FOR GIRDERS	

図番	標題	掲載
31	DETAILS OF LATERAL BRACINGS (II)	
32	DETAILS OF LATERAL BRACINGS (III)	
33	DETAILS OF EXPANSION JOINTS	
34	(TRUSS SPAN) STRESS SHEET OF ARCH	
35	MARKING DIAGRAM OF TRUSS SPAN	
36	(TRUSS SPAN) DETAILS OF FLOOR BEAMS	
37	(TRUSS SPAN) DETAILS OF CROSS BEAMS, STRINGERS	
38	(TRUSS SPAN) DETAILS OF STRINGERS	
39	(TRUSS SPAN) DETAILS OF TRUSS (1)	
40	(TRUSS SPAN) DETAILS OF TRUSS (2)	
41	(TRUSS SPAN) DETAILS OF TRUSS (3)	
42	(TRUSS SPAN) DETAILS OF DIAGONALS	
43	(TRUSS SPAN) DETAILS OF HANGERS (1)	
44	(TRUSS SPAN) DETAILS OF HANGERS & VERTICALS	
45	(TRUSS SPAN) DETAILS OF TIES	
46	(TRUSS SPAN) DETAILS OF BOTTOM LATERALS	
47	(TRUSS SPAN) DETAILS OF PORTAL BRACINGS	
48	(TRUSS SPAN) DETAILS OF SWAY BRACINGS	
49	(TRUSS SPAN) DETAILS OF LONGITUDINAL STRUTS FOR TOP LATERAL	
50	(TRUSS SPAN) DETAILS OF DIAGONALS FOR TOP LATERAL BRACINGS	
51	(TRUSS SPAN) DETAILS OF SHOES & EXPANSION JOINTS	
52	DETAILS OF HANDRAIL (1)	
53	DETAILS OF HANDRAILS & LAMP POSTS	
54	DETAILS OF LIGHT PEDESTAL PD1	
55	DETAILS OF HANDRAIL ON WINGS AND LIGHT PEDESTAL PD2	
56	DETAILS OF LIGHT PEDESTAL PD3 AT THE ENTRANCE OF TRUSS BRIDGE	
57	DETAILS OF REFUGE BAY	
58	BETWEEN (TRUSS & GIRDER SPAN) DETAILS OF EXPANSION JOINT EJ5 & EJ8	
番外1	DETAILS OF WORKING SHAFT	
番外2	DETAILS OF ORNAMENTS AT WING WALLS OF ABUTMENT A3 & A4	



Link	Reinforcing Size	Unit wt.	Length	Weight	Remarks
Reinforcements for Base & Working Chamber					
W1	176	25	285	28	18473 Base
W2	176	19	222	20	799 14002
W3	120				2588
W4	16				477 1583
W5					40 838 121
W6					37 821 1314
W7					31 688 101
W8	8				42 932 746
W9	80				90 1298 Cutting edge
W10					35 777 3216
W11					34 755 6040
W12	288	25	285	28	18473 Base
W13	40	19	222	20	799 14002
W14	32				50 1110 3562
W15	14				33 733 1026
W16	80				52 1154 4285
W17	20				25 577 4219
W18	22				408 3834
W19	30				13 355 1326
Total					141724
Summary of Reinforcement for Pier					
Base Reinforcements					141724
Shell					812500
Total					954224

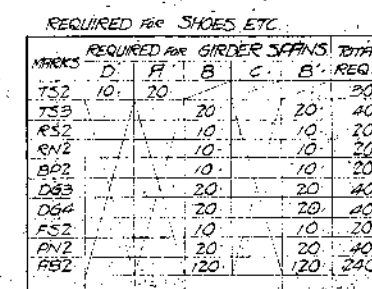
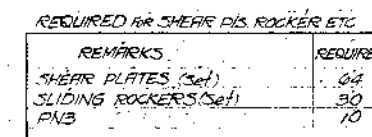
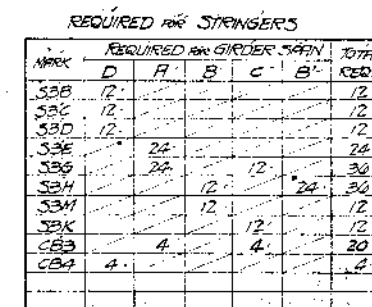




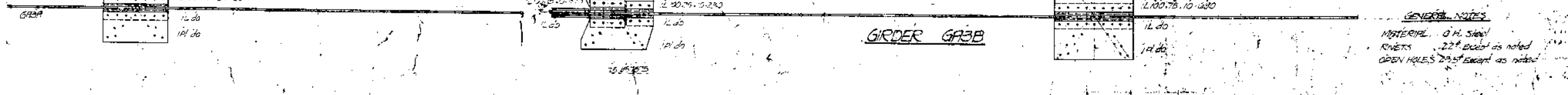
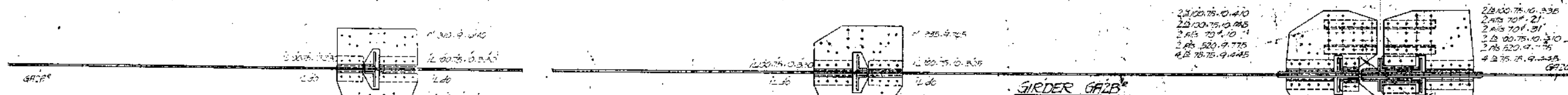
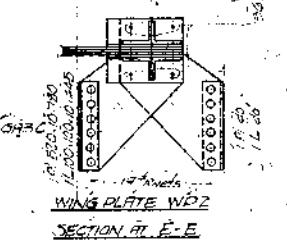
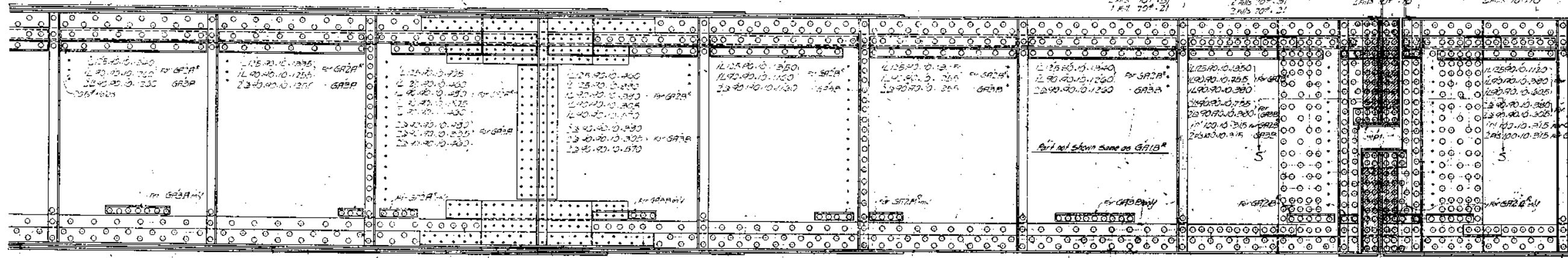
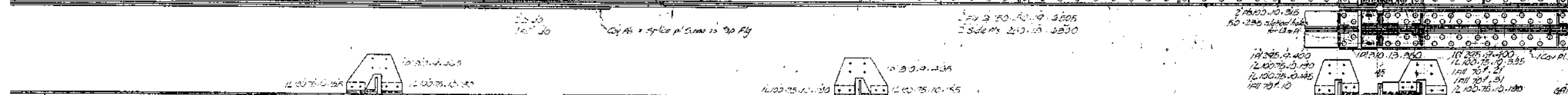
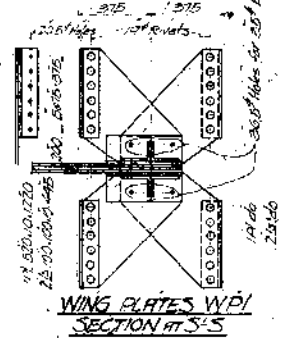
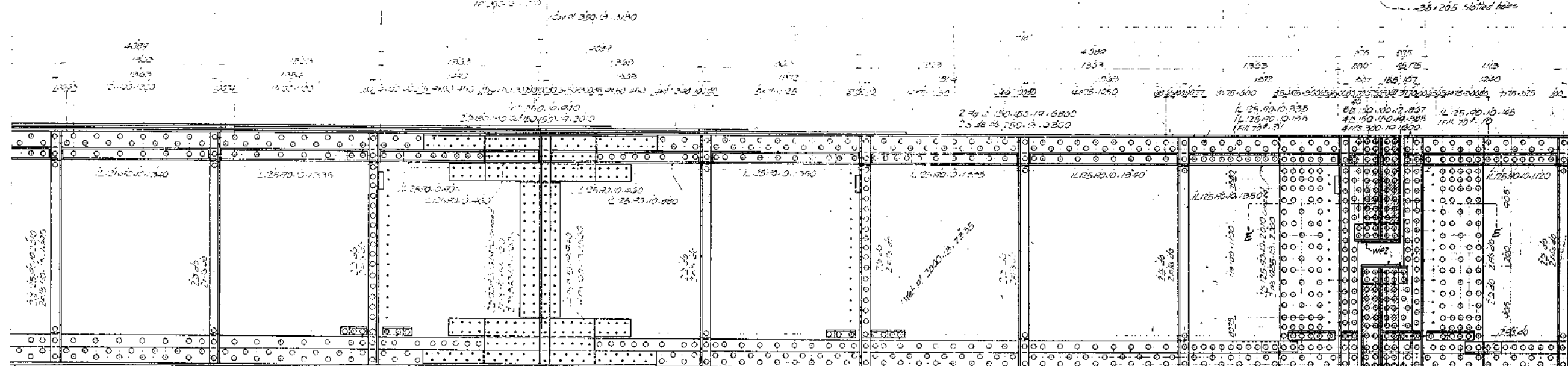
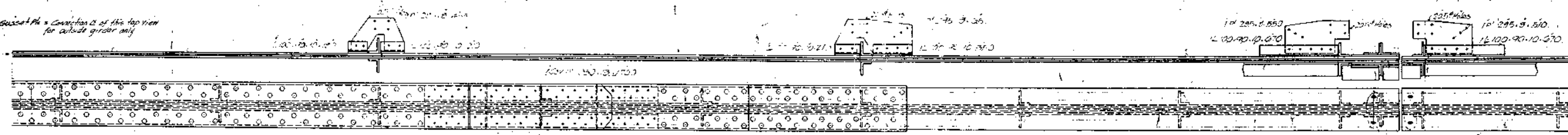
MATERIAL LIST OF PNEUMATIC CAISSON FRAME

ITEM	QTY	UNIT	DESCRIPTION	WEIGHT (kg)
FR1	1	Set	FR1	1572.7
FR2	1	Set	FR2	1572.7
FR3	1	Set	FR3	1572.7
FR4	1	Set	FR4	1572.7
FR5	1	Set	FR5	1572.7
FR6	1	Set	FR6	1572.7
FR7	1	Set	FR7	1572.7
FR8	1	Set	FR8	1572.7
FR9	1	Set	FR9	1572.7
FR10	1	Set	FR10	1572.7
FR11	1	Set	FR11	1572.7
FR12	1	Set	FR12	1572.7
FR13	1	Set	FR13	1572.7
FR14	1	Set	FR14	1572.7
FR15	1	Set	FR15	1572.7
FR16	1	Set	FR16	1572.7
FR17	1	Set	FR17	1572.7
FR18	1	Set	FR18	1572.7
FR19	1	Set	FR19	1572.7
FR20	1	Set	FR20	1572.7
FR21	1	Set	FR21	1572.7
FR22	1	Set	FR22	1572.7
FR23	1	Set	FR23	1572.7
FR24	1	Set	FR24	1572.7
FR25	1	Set	FR25	1572.7
FR26	1	Set	FR26	1572.7
FR27	1	Set	FR27	1572.7
FR28	1	Set	FR28	1572.7
FR29	1	Set	FR29	1572.7
FR30	1	Set	FR30	1572.7
FR31	1	Set	FR31	1572.7
FR32	1	Set	FR32	1572.7
FR33	1	Set	FR33	1572.7
FR34	1	Set	FR34	1572.7
FR35	1	Set	FR35	1572.7
FR36	1	Set	FR36	1572.7
FR37	1	Set	FR37	1572.7
FR38	1	Set	FR38	1572.7
FR39	1	Set	FR39	1572.7
FR40	1	Set	FR40	1572.7
FR41	1	Set	FR41	1572.7
FR42	1	Set	FR42	1572.7
FR43	1	Set	FR43	1572.7
FR44	1	Set	FR44	1572.7
FR45	1	Set	FR45	1572.7
FR46	1	Set	FR46	1572.7
FR47	1	Set	FR47	1572.7
FR48	1	Set	FR48	1572.7
FR49	1	Set	FR49	1572.7
FR50	1	Set	FR50	1572.7
FR51	1	Set	FR51	1572.7
FR52	1	Set	FR52	1572.7
FR53	1	Set	FR53	1572.7
FR54	1	Set	FR54	1572.7
FR55	1	Set	FR55	1572.7
FR56	1	Set	FR56	1572.7
FR57	1	Set	FR57	1572.7
FR58	1	Set	FR58	1572.7
FR59	1	Set	FR59	1572.7
FR60	1	Set	FR60	1572.7
FR61	1	Set	FR61	1572.7
FR62	1	Set	FR62	1572.7
FR63	1	Set	FR63	1572.7
FR64	1	Set	FR64	1572.7
FR65	1	Set	FR65	1572.7
FR66	1	Set	FR66	1572.7
FR67	1	Set	FR67	1572.7
FR68	1	Set	FR68	1572.7
FR69	1	Set	FR69	1572.7
FR70	1	Set	FR70	1572.7
FR71	1	Set	FR71	1572.7
FR72	1	Set	FR72	1572.7
FR73	1	Set	FR73	1572.7
FR74	1	Set	FR74	1572.7
FR75	1	Set	FR75	1572.7
FR76	1	Set	FR76	1572.7
FR77	1	Set	FR77	1572.7
FR78	1	Set	FR78	1572.7
FR79	1	Set	FR79	1572.7
FR80	1	Set	FR80	1572.7
FR81	1	Set	FR81	1572.7
FR82	1	Set	FR82	1572.7
FR83	1	Set	FR83	1572.7
FR84	1	Set	FR84	1572.7
FR85	1	Set	FR85	1572.7
FR86	1	Set	FR86	1572.7
FR87	1	Set	FR87	1572.7
FR88	1	Set	FR88	1572.7
FR89	1	Set	FR89	1572.7
FR90	1	Set	FR90	1572.7
FR91	1	Set	FR91	1572.7
FR92	1	Set	FR92	1572.7
FR93	1	Set	FR93	1572.7
FR94	1	Set	FR94	1572.7
FR95	1	Set	FR95	1572.7
FR96	1	Set	FR96	1572.7
FR97	1	Set	FR97	1572.7
FR98	1	Set	FR98	1572.7
FR99	1	Set	FR99	1572.7
FR100	1	Set	FR100	1572.7

JIUSO BASHI
OVER
SHIN YODO-GAWA AT JIUSO
OSAKA-FU
STEEL FRAME FOR WORKING CHAMBER
OF PNEUMATIC CAISSON
Scale 1:20
10

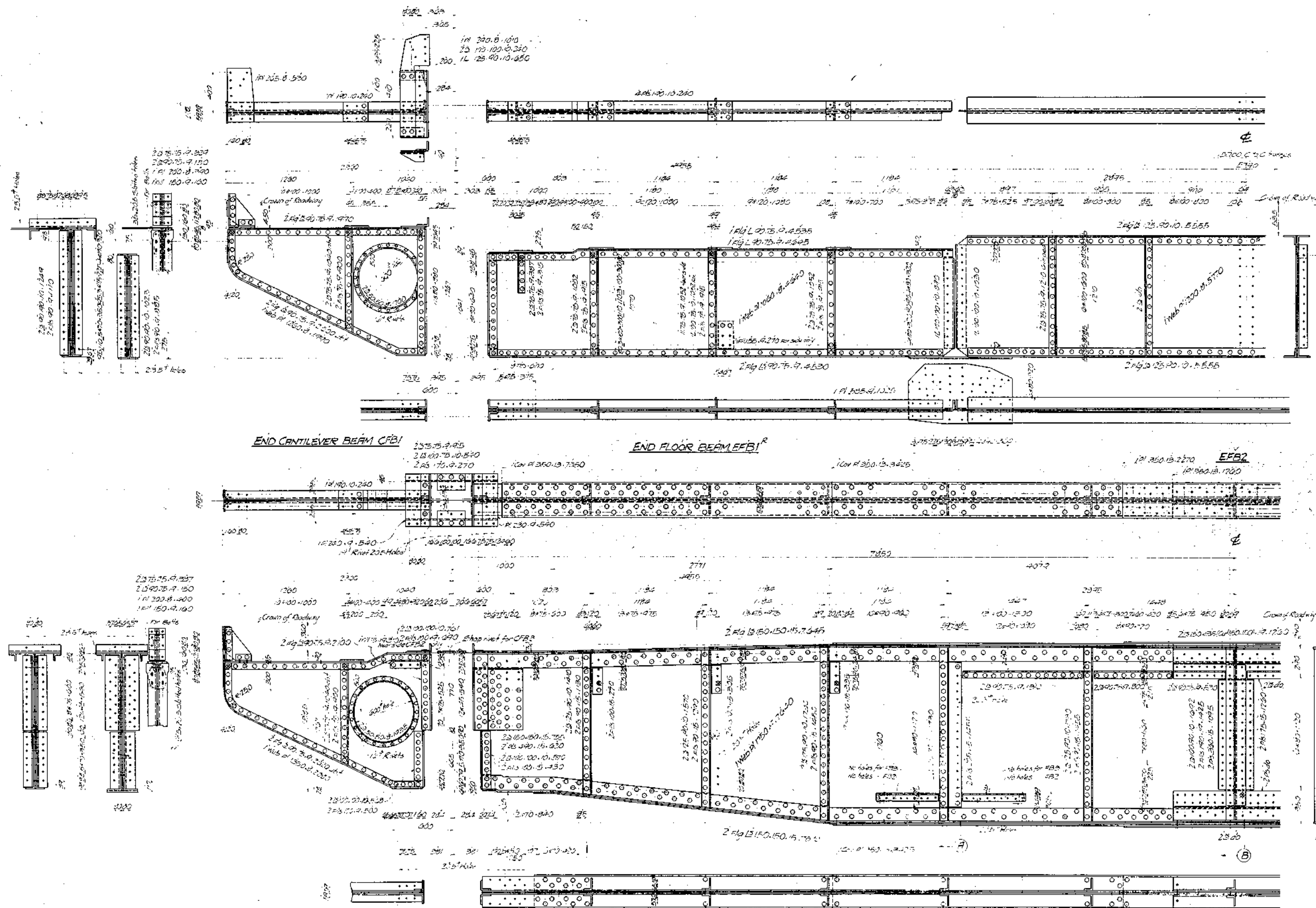


Basculat Plate & Connection of this top view for outside girder only



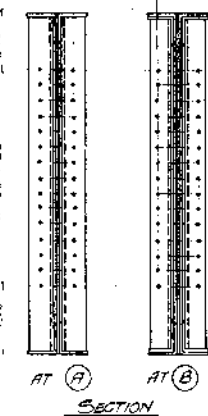
JIUSO BASHI
OVER
SHIN YODO GAWA AT JIUSO
OSAKA-FU
DETAILS OF MAIN GIRDER (4)

Scale 1:15
MATERIAL: 0.1. Steel
RIVETS: 22# bolts as noted
OPEN HOLES: 2.5" except as noted



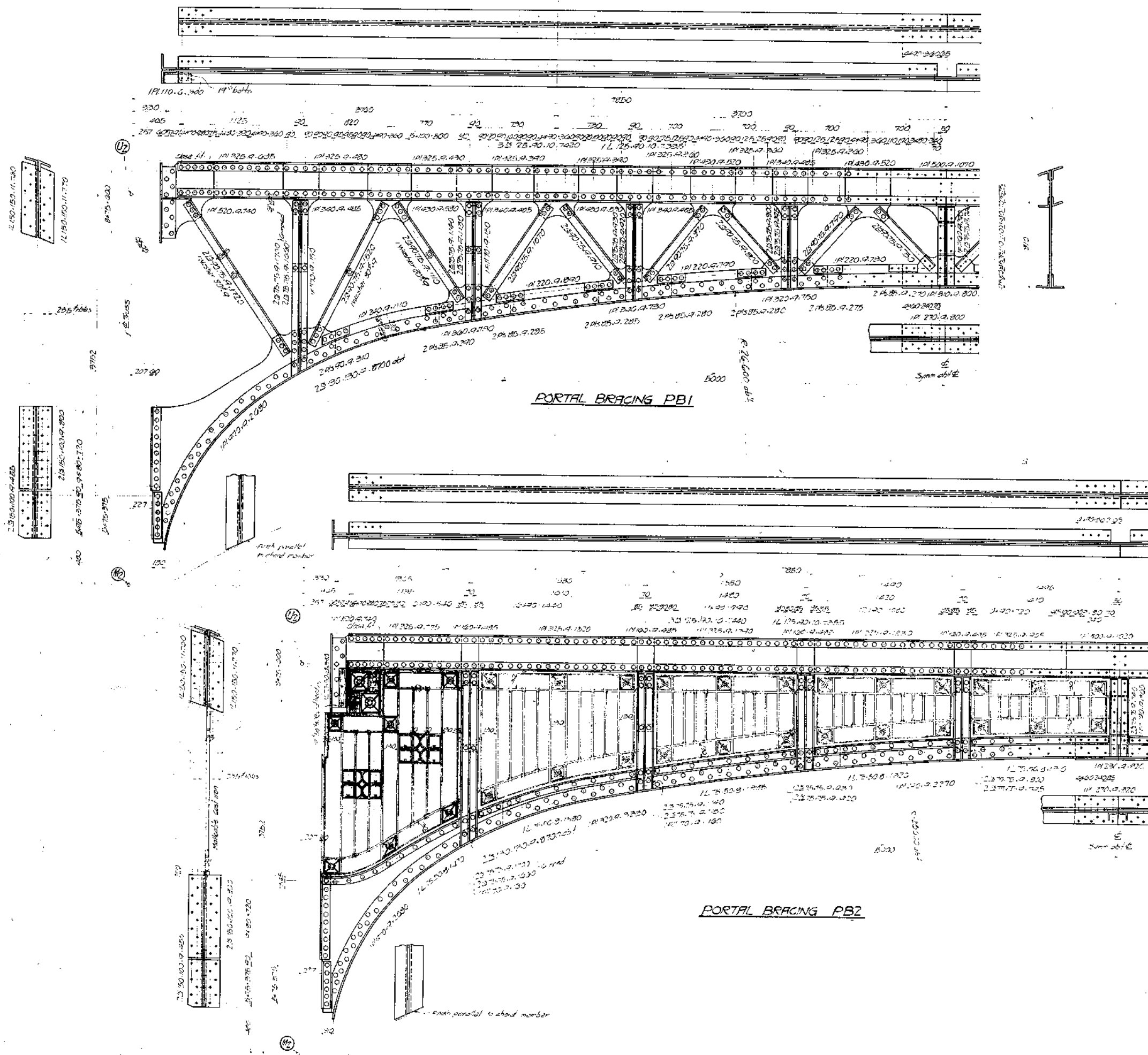
REQUIRED (Per 1308V)	
2	END FLOOR BEAMS FB1 & FB2
2	END FLOOR BEAM FB3
2	END CANTILEVER BEAM CFB1
2	END CANTILEVER BEAM CFB2
2	END CANTILEVER BEAM CFB3
2	INTERMEDIATE FLOOR BEAM FB1
2	INTERMEDIATE FLOOR BEAM FB2
2	INTERMEDIATE FLOOR BEAM FB3
2	INTERMEDIATE CANTILEVER BEAM CFB1
2	INTERMEDIATE CANTILEVER BEAM CFB2
2	INTERMEDIATE CANTILEVER BEAM CFB3

Marking diagram see sheet 1 no. 35



JIUSO BASHI
OVER
SHIN YODO GAWA AT JIUSO
OSAKA FU
(TRUSS SPAN)
DETAILS OF FLOOR BEAMS
Scale 1/15
1" = 1'-0"
1/4" = 1'-0"
1/8" = 1'-0"

GENERAL NOTES
MATERIAL S.H. Steel
RIVETS 22" FB1, FB2, FB3
18" FB1, FB2, FB3, CFB1, CFB2, CFB3
except as noted
OPEN HOLES 22" FB1, FB2, FB3, except as noted
20" FB1, FB2, FB3, CFB1, CFB2, CFB3
except as noted



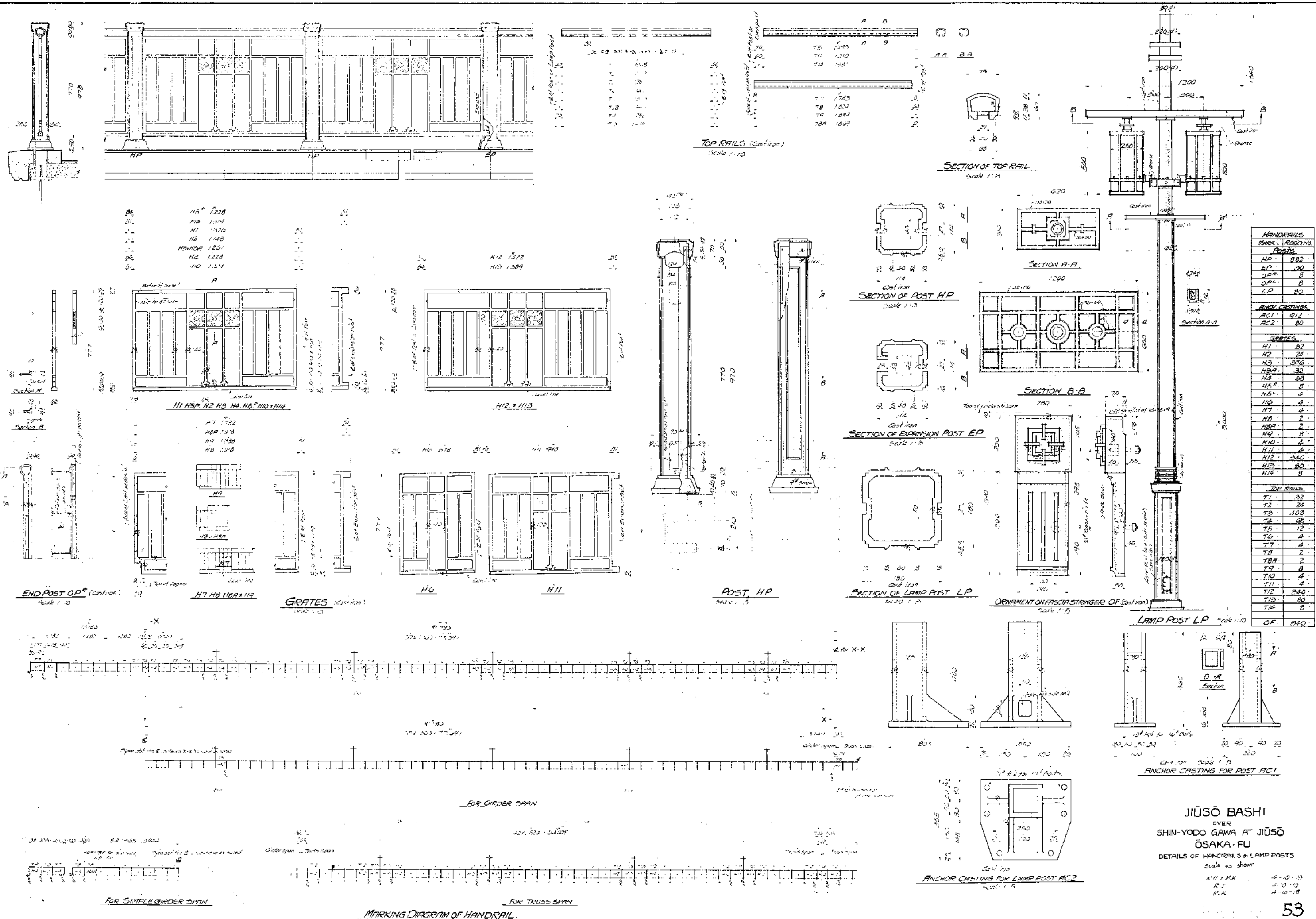
REQUIRED (for 5 spots)	
8	PORTAL BRACING PB1
2	PORTAL BRACING PB2

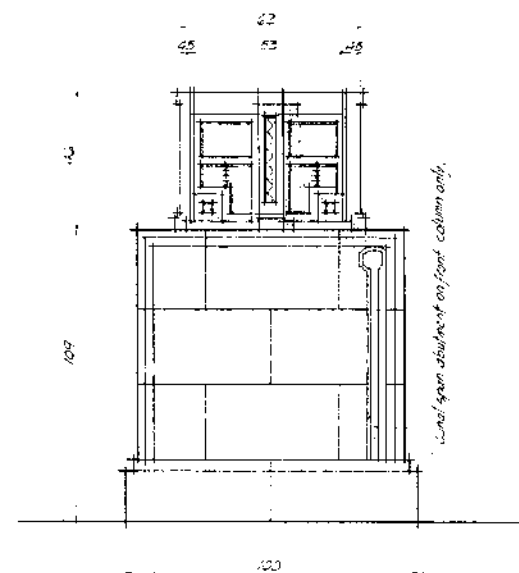
Marking Diagram see sheet no 35

JIUSO BASHI
OVER
SHIN YODO GAWA AT JIUSO
OSAKA FU
(TRUSS SPAN)
DETAILS OF PORTAL BRACINGS
Scale 1:15

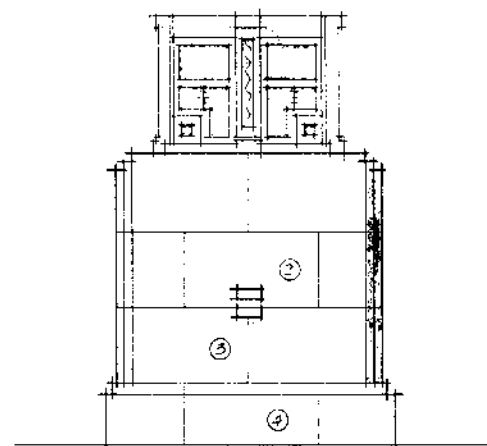
GENERAL NOTES

MATERIAL	Steel	4-8-2
RIVETS	Steel	4-9-2
OPEN HOLE	Steel	4-9-5

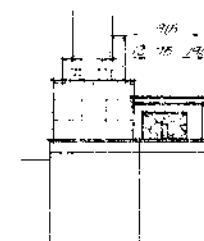




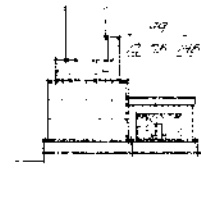
SIDE ELEVATION



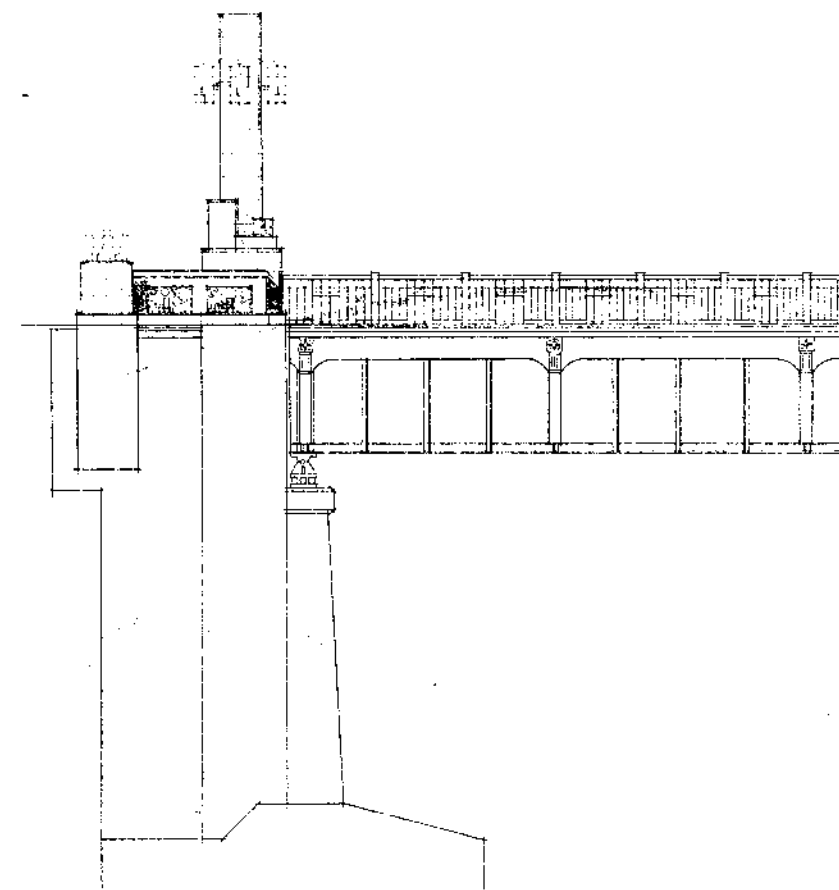
FRONT ELEVATION



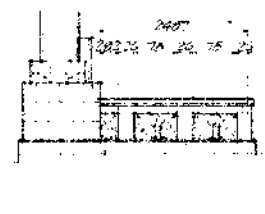
FRONT ELEV. OF ABUTMENT FOR R2



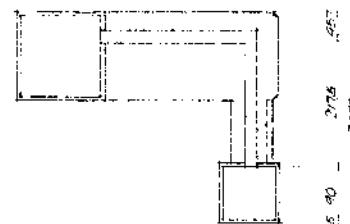
FRONT ELEV. OF ABUTMENT FOR R3



SIDE ELEV. OF ABUTMENT FOR R3 & R4

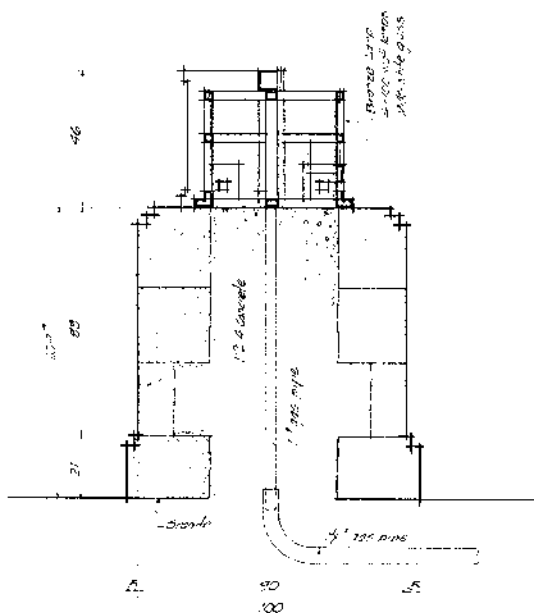


FRONT ELEV. OF ABUTMENT FOR R4

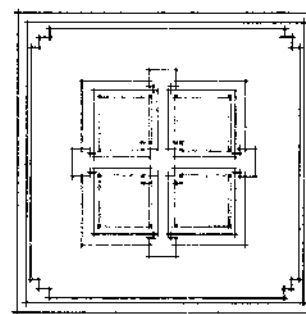


DETAILS OF HANDRAIL ON WINGS

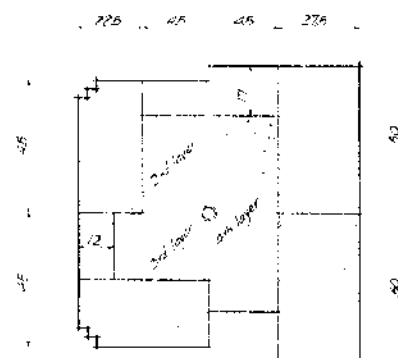
Scale 1/4" = 1'-0"



SECTIONAL ELEVATION



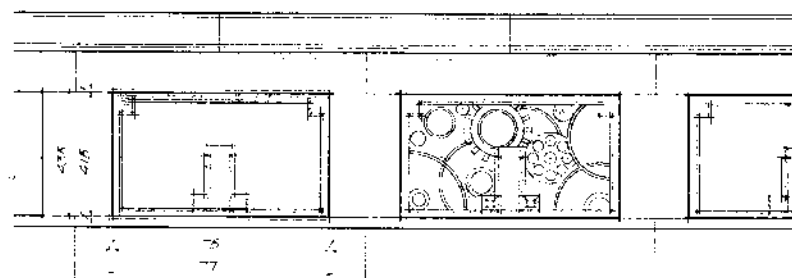
PLAN



SECTIONAL PLAN

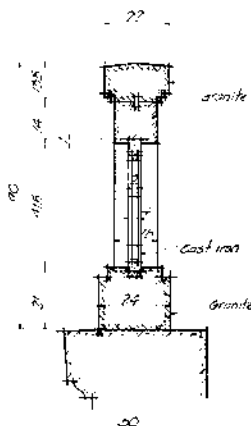
DETAILS OF LIGHT PEDESTAL R02

Scale 1/4" = 1'-0"



HANDRAIL ON WING

Scale 1/4" = 1'-0"



JIUSO BASHI
OVER
SHIN-YODO GAWA AT JIUSO
OSAKA-FU
DETAILS OF HANDRAIL ON WINGS
AND LIGHT PEDESTAL R02
Scale as shown

1/4" = 1'-0"
1/8" = 1'-0"
1/16" = 1'-0"